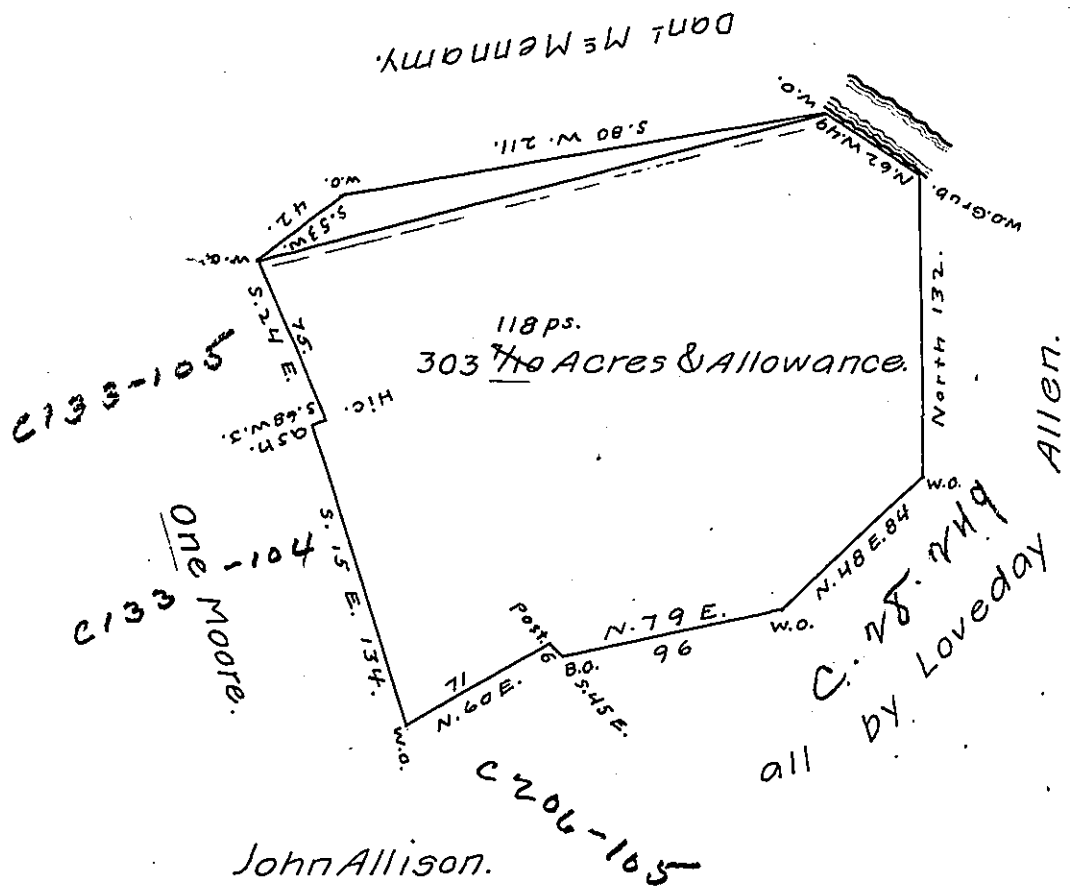


M 431



Surveyed for John Shields in Right of James Armstrongs
 No 1945 dated 3d April 1769 No 2077.
 order the above described Tract of Land Containing three
 Hundred & three Acres & ^{118 ps.} ~~7/10 of an acre~~ with the Allowance
 of 6 p. Cent for Roads, Situate on the West Side of Loyal-
 hannan Creek below the mouth of Crab Branch in Westmore-
 land County - survey'd the 16th of October 1770 &

No. _____ Robert McCrea, D.S.

bro't to ye surv. Genl office sometime in ye Autumn Session
 of Assembly ^{in 1787} but not Accepted as an Office Paper until March
 1788 when ye surv. Genl directed the Acceptance of it.

E.L.

IN TESTIMONY that the above is a copy of the original remaining on file in
 the Department of Internal Affairs of Pennsylvania, made
 conformably to an Act of Assembly approved the 16th day of
 February 1833, I have hereunto set my hand and caused
 the Seal of said Department to be affixed at Harrisburg,
 this third day of January, 1907.

Isaac R. Brown
 Secretary of Internal Affairs.